

A stylized letter 'Z' logo composed of three parallel diagonal bars. The top bar is light gray, the middle bar is pink, and the bottom bar is light gray.

Ashok Meadows

Brochure

ZRICKS.COM

www.Zricks.com



HERE'S WHERE THE REST OF YOUR LIFE
BECOMES THE BEST OF YOUR LIFE

**ASHOK
MEADOWS**
HINJWADI PHASE - 1, PUNE



**MORE
OF
EVERY
THING**

Site Office: Ashok Meadows, Rajiv Gandhi Infotech Park,
Next to Wipro, Hinjawadi, Phase - 1, Pune - 411 057.

Corporate Office: 1, Peninsula Sports, Mathuradas Mills,
Senapati Bapat Marg, Lower Park, Mumbai - 400 013.

CALL: 1900 2 666 333

SMS <MEADOWS> TD 56677

www.ashokmeadows.com

marketing@peninsula.com

Disclaimer: Most of the images used herein are virtual photos of property at Ashok Meadows. Some information provided herein may not be available in actual and should not be considered as a prospectus. Terms & Conditions apply. Project has been funded by Standard Chartered Bank and Standard Chartered Investments & Loans India Ltd.





MORE SPACE, MORE NATURE, MORE OF LIFE

From the house of Peninsula Land Limited, another remarkable landmark is waiting for you.

Discover a more exciting lifestyle across 24.5 acres of lush green meadows with 32% dedicated to open spaces.

Located in the heart of Hiranandani Phase II, the driving force behind Pune's contemporary culture, it provides you with the best of urban indulgence.

The property has been designed to provide you with more space in each apartment, more amenities than you can imagine and in a location that is more happening than anywhere else in Pune.

Welcome to your new home at **Arise**, Pune.
A place where you'll get more of everything.



ZRICKS



GET MORE FROM YOUR HOME

Today, when every inch of living space is rapidly shrinking, Zrick Members is a rare phenomenon.

The ultra-splendid 2 BHK and 3 BHK apartments range between 1050 sq. ft. to 2070 sq. ft. This ensures you have more space in your home to live a lifestyle that you truly deserve.



ZRICKS



MORE SPACE WITH GARDEN APARTMENTS

Enjoy an abode that's nestled in nature.
At Akshay Greens, the exclusive garden apartments open up to your very own private garden, so that you wake up to the beauty of nature at your doorstep.

ZRICKS.COM





MORE AMENITIES, MORE LUXURY

If you ever feel the need for even more space, our landmark clubhouse Club Penthouse redefines the concept of club living.

Come, experience a lifestyle of uber indulgence.



GET MORE FROM YOUR NEIGHBORHOOD

Highland Phase I, the IT Hub of Pune, is the driving force behind the city's contemporary culture. Ashok Meadows is situated right in the heart of the area of greenery and good living, thus making it close to everywhere you need to be.

An urban lifestyle that you always imagined is now waiting for you.

PROXIMITY

- Highland Circle - 07 km
- Highland Drive - 1.5 km
- Phase II - 2.4 km
- Phase III - 3.9 km

SPORTS

- Sahakar Stadium - 9.5 km
- MCh Dinkar Stadium Ground - 14.3 km

BANKS

- SB Bank - 60 m
- HDFC Bank - 60 m
- Kw Bank - 60 m

EDUCATIONAL FACILITIES

SCHOOLS

- Mercedes Benz International School - 1.2 km
- Arbuz International School - 4.7 km
- Panda Public School - 7.2 km
- Euro International School - 11.9 km

COLLEGES

- Symbiosis Institute of International Business - 0.88 km
- International Institute of Information Technology - 1.1 km
- Rajd College of Engineering & Management - 4.0 km

MALLS

- Nov Mall - 3.2 km

COMPANIES LOCATED IN VICINITY OF THE PROJECT

- Tata Technologies - 0.1 km
- Wipro - 0.2 km
- Digipoint Technologies - 0.8 km
- Adventure - 1.3 km
- Infospace - 1.3 km
- Percept Technologies - 1.3 km

HOSPITALS AND MEDICAL CENTRES

- Polaris Healthcare - 0.2 km
- Apple Hospital - 4.2 km
- Arbuz City Hospital - 4.7 km
- Surya Hospital - 5.2 km

- Hotels
- Education
- Relief Pump
- Food and Beverage
- Hospitals
- ATM
- Commercial
- Shopping
- Sports

LOCATION MAP



BUILT ON THE PROMISE OF MORE

To fulfil this promise, Peninsula Land has partnered with some of the best names from the design and construction industry.

ABOUT PENINSULA LAND LIMITED

As part of the Federal Real Estate Group, the company is committed to creating international landmarks that redefine India's skyline. We are amongst the first real estate companies to be listed on the stock exchange. This fact is the biggest indicator of its adherence to good corporate governance along with fair and transparent business practices. Today, we are an integrated real estate company with verticals that include a realty firm, home décor and concierge services.

OLDNER REALTY

Oldner Realty & Infrastructure Private Limited is one of India's leading real estate developers. Some of the prominent projects developed by Oldner Realty in Pune include Clover Watergardens, Clover Global, Clover Gardens, Clover Classic, Clover Trump and Clover Village I & II.

WPL ARCHITECTS

Formed in 1982, WPL Architects combine master planning, architecture, landscape, interior and furniture design to produce a total designer product. They have won a number of awards for their work on various prominent projects.

KARNIA ASSOCIATES PVT. LTD.

While the overall design sensibility of KAPL is urban contemporary, they balance their international approach to architecture with designs that are locally sensitive.

STRETECHNIK

Singapore based Strecthnik is a globally renowned landscape design firm. Their work has been recognized by several awards for design excellence over the last 15 years.



LANDMARKS THAT BECAME BENCHMARKS

We have a legacy of creating landmarks on more than 24 million sq. ft. of land across Mumbai, Pune, Laxnau, Ahmed, Kolkata, Bangalore, Goa and Hyderabad.

Here are some of our distinguished projects:



ASHOK TOWERS
Luxury redefined, our project has already seen a 200% appreciation.



CITYSPACE
Premium shopping mall in South Mumbai.



PERNELLIA CORPORATE PARK
Home to top Fortune 500 companies.



ONE
South Mumbai's most exciting shopping mall experience.



ASHOK GARDENS
Our landmark project that changed the face of Durgam.



PERNELLIA BUSINESS PARK
Corporate destination of choice.



PERNELLIA BUSINESS PARK
Corporate destination of choice.

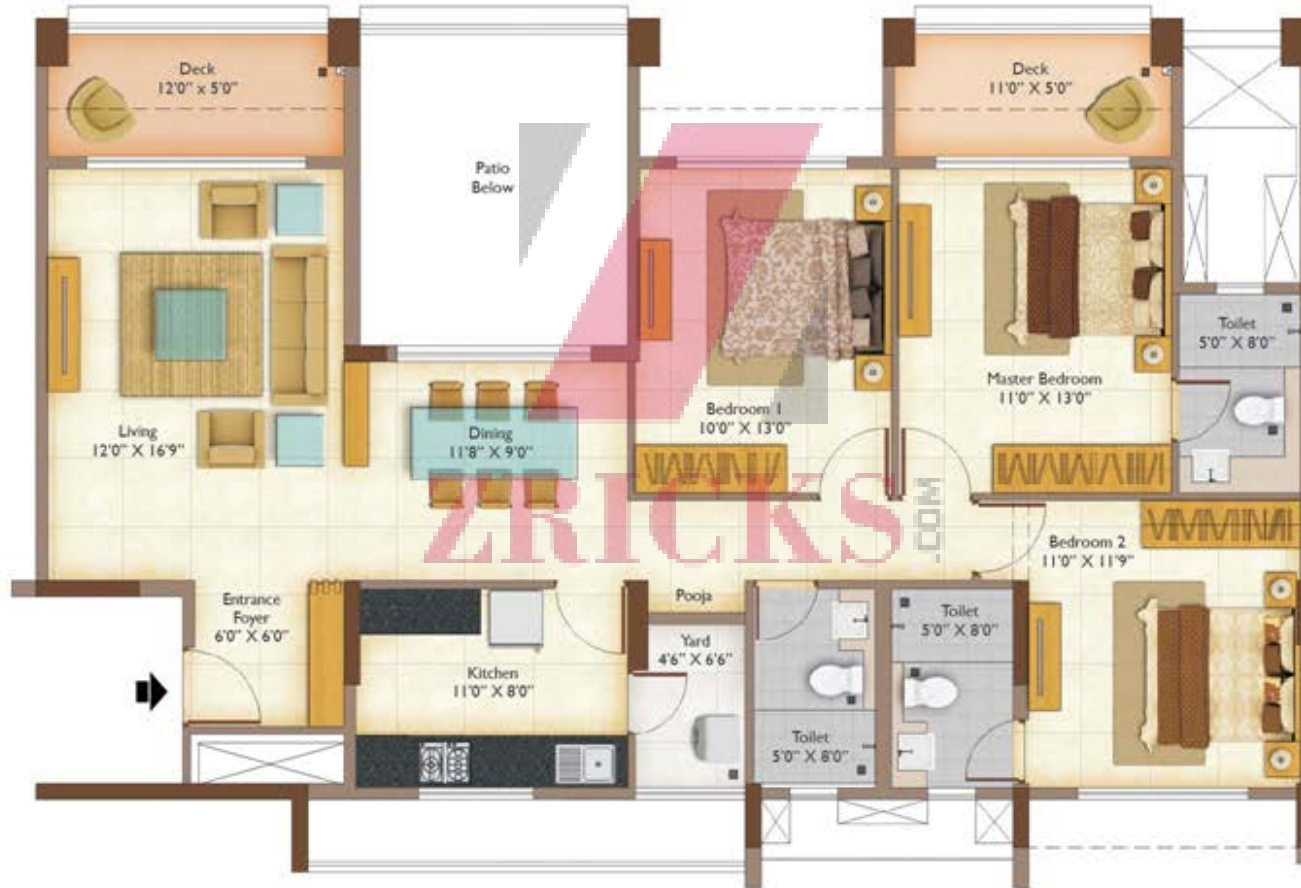
ZRICKS .COM



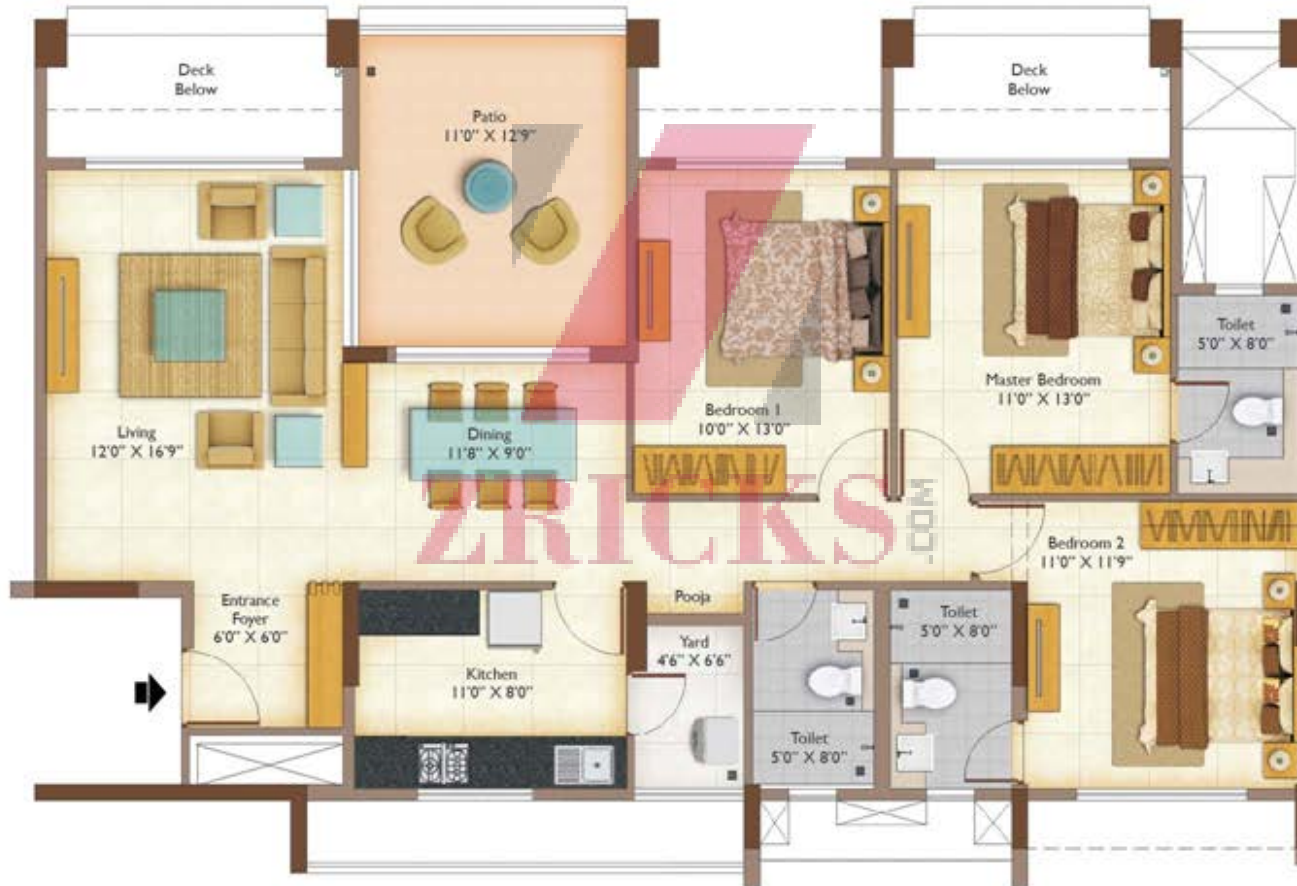
FLOOR PLAN



FLOOR PLAN



FLOOR PLAN



FLOOR PLAN



FLOOR PLAN



FLOOR PLAN



FLOOR PLAN

2 BHK with Deck	Type 1	Unit No. 1 & 2
3 BHK with Deck	Type 1	Unit No. 3 & 4





2 BHK with Patio	Type 2	Unit No. 1 & 2
3 BHK with Patio	Type 2	Unit No. 3 & 4

FLOOR PLAN





FLOOR PLAN

2 BHK with Deck	Type 1	Unit No. 1 & 2
3 BHK with Deck	Type 3	Unit No. 3 & 4





FLOOR PLAN

2 BHK with Patio	Type 2	Unit No. 1 & 2
3 BHK with Patio	Type 4	Unit No. 3 & 4

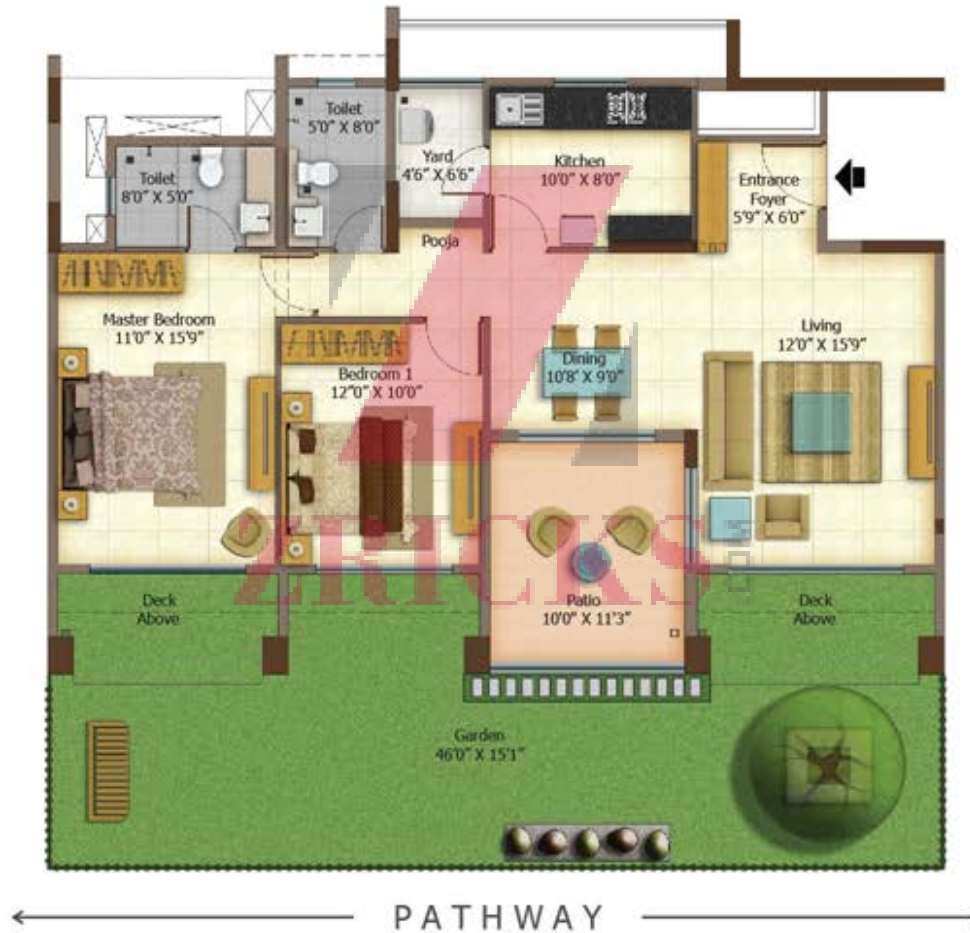




FLOOR PLAN



FLOOR PLAN



FLOOR PLAN

GENERAL

- Premium vitrified tiles flooring and skirting
- Video door phone with camera outside the main door
- Acrylic emulsion paint on the internal walls and plastic emulsion paint for the ceiling

KITCHEN

- Granite platform with stainless steel sink and drain board
- Service counter in granite
- Ceramic tiles dado above main counter and service counter upto 2' height
- Ceramic tiles dado below main and service counter
- Exhaust fan
- Gas leak detector

ELECTRICALS

- Concealed wiring with copper conductors
- Adequate power points in the entire apartment
- Superior quality branded switches

TOILETS

- Anti-skid ceramic tiles or equivalent flooring
- Ceramic tiles dado upto 7' height
- EWC
- Hot and cold mixer in shower area
- Storage water heater
- Superior quality sanitary fittings and fixtures of Jaquar or equivalent make



**GET READY
FOR TOMORROW,
TODAY.**



ZRICKS



Mini Bro_6 pgr_Pasting folder

A stylized letter 'Z' logo composed of three parallel diagonal bars. The central bar is pink, while the top and bottom bars are grey.

Need Final Approval...

ZRICKS.COM

www.Zricks.com